



Nafuquick

Colour overview

EXPERTISE
CONCRETE COSMETICS





light grey



grey



medium grey



concrete grey

Nafuquick

Nafuquick

When it comes to repairs and joint fillings in shell constructions or to fillings on hot concrete, the Nafuquick product range is the right choice. The range includes universal fillers and thermal fillers in a medium and fine grain size quality. Whether you want to carry out a measure on a standard or warm concrete - with the Nafuquick range we offer you the right product for your requirements.

- Polymer-modified
- Ready to use
- Weather and frost resistant
- Abrasion and light-resistant pigmentation

Nafuquick HT / HT fine

- **Thermal filler** for layer thicknesses **up to 10 / 8 mm**
- For small demolitions and surface fillings
- For substrate temperatures up to + 70 °C
- Largest grain size 0.35 / 0.25 mm

Nafuquick

- **Fine filler** for layer thicknesses **up to 6 mm**
- Suitable for filling large areas
- Largest grain size 0.35 mm

Nafuquick uni

- **Universal filler** for layer thicknesses **up to 20 mm**
- Closing of deeper cavities and rigid prefabricated joints
- Maximum grain size 0.7 mm

Note: Colour deviations from the original tones are due to the printing process and the material. For precise assessment, test areas must be created. The colour shade can only be assessed after complete drying. Further information on application and properties can be found in our „Concrete cosmetics“ application manual. When using Nafuquick products, the technical data sheets and safety data sheets must be observed.

Nafuquick HT / HT fine



concrete grey

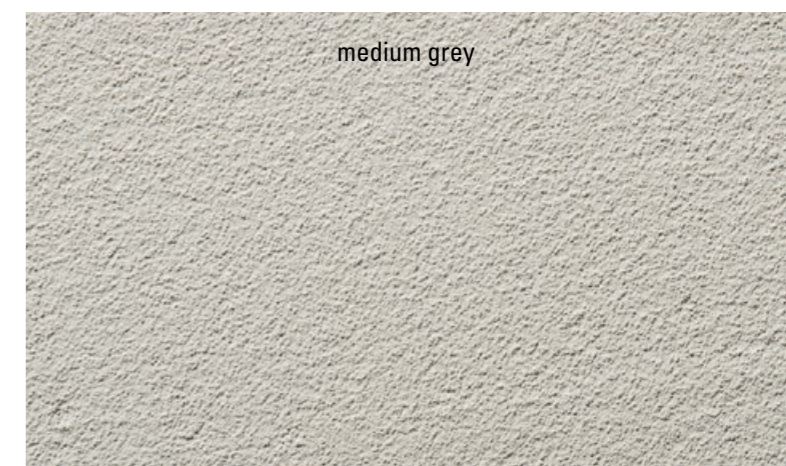


cement grey

Nafuquick uni



concrete grey



medium grey

MC-Bauchemie Müller GmbH & Co. KG
Concrete Industry
Am Kruppwald 1-8
46238 Bottrop, Germany

Phone: +49 2041 101-50
Fax: +49 2041 101-588

CI@mc-bauchemie.com
www.mc-bauchemie.com



BE SURE. BUILD SURE.

Contact details

